

PICTURES OF INFRASTRUCTURE

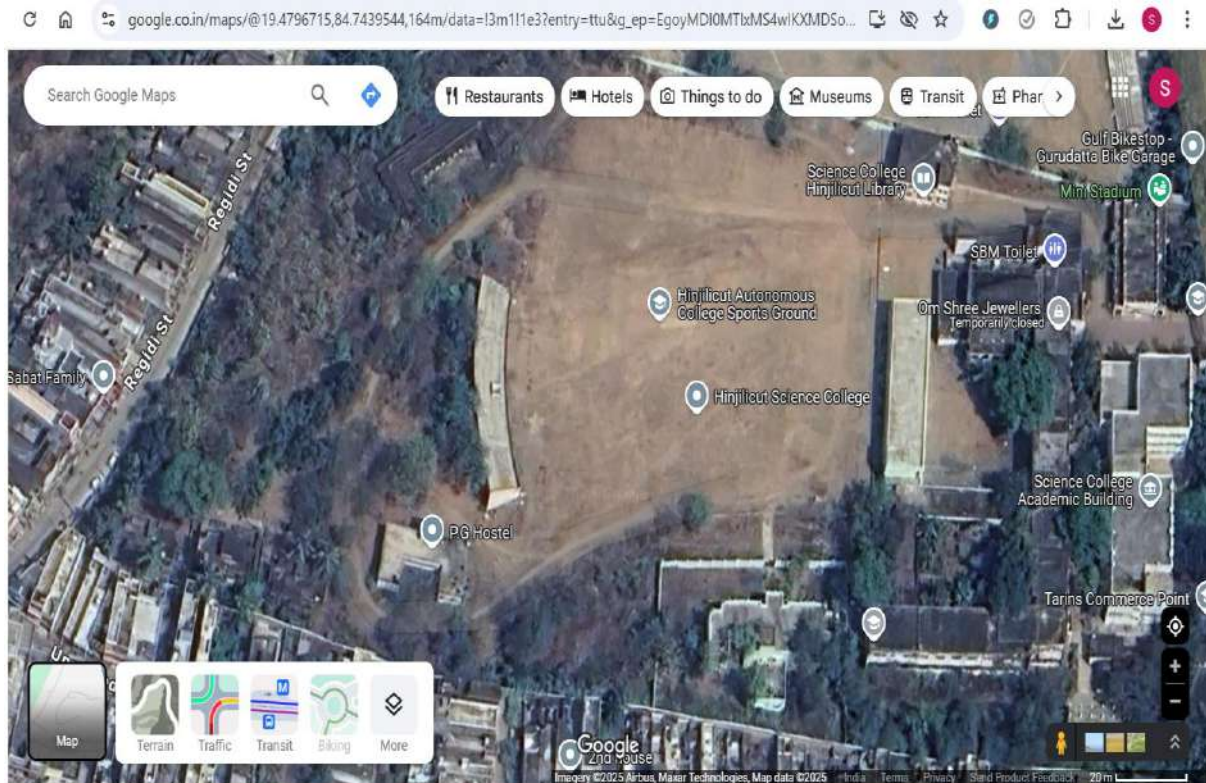


SCIENCE COLLEGE (AUTONOMOUS)

HINJILICUT, GANJAM

Estd: 1963

GOOGLE MAP LOCATION OF THE COLLEGE:



HISTORY OF THE COLLEGE IN A NUTSHELL:

Science College (Autonomous) Hinjilicut is a premier educational institution located in the semi-urban area of the Ganjam district in Odisha. It was established in 1963. Late Kishore Chandra Panda, the then Headmaster of Brundaban Vidyapith, along with the active participation of the local community, played a pivotal role in founding the college at Hinjilicut on July 2, 1963. The Khallikote College Trust Managing Committee took over the management of the college in 1964. The Raja Saheb of Khallikote, Late Purna Chandra Mardharaj Deo, became the president of the Management Committee on September 1, 1964. After his death, Khallikote Rani Saheba Smt. V. Sugnana Kumari Deo took over as the president of the Governing Body on April 19, 1987.

The college is located on NH-59, which connects Gopalpur to Raipur. The campus spans an area of 10 acres. Initially, the college was affiliated with Utkal University, but after the establishment of Berhampur University in 1967, the college became affiliated with it. The college was recognized by the University Grants Commission (UGC) under sections 2(f) and 12B in 1963, and it was granted autonomous status by the UGC starting from the academic session 2014-15.



The college has a clear vision: to build a thriving social fabric by disseminating knowledge to all sections of society through value-based education. The curriculum is designed with a focus on the local needs of students while aligning with the mainstream academic scene. The Choice-Based Credit System (CBCS) was introduced in the academic session 2015-16. Additionally, the National Education Policy (NEP) was implemented in the session of 2024.

The college offers Postgraduate courses in Commerce, Botany, Zoology, Physics, Odia, Political Science and Economics. It also provides three-year/four-year degree courses in Arts, Science, and Commerce with Honours in all affiliated subjects. Self-financing courses like BBA and BCA, as well as career-oriented Add-on courses like e-Commerce and EETC, are also offered.

In addition to imparting and enhancing the quality of higher education, the college strives to create an atmosphere of learning.

College Infrastructure Overview

The college campus comprises several key buildings and facilities that cater to the academic, administrative, residential, and extracurricular needs of students and staff.

Key Buildings and Facilities:

1. Main Administrative Building:

- Houses administrative sections, departments, and classrooms.

2. New Academic Building:

- Dedicated to academic activities, housing additional classrooms, departments of humanities, a mini conference hall and labs.

3. Central Library:

- Housed in a separate building, the library is automated using **EDIFYIN Software**.
- Features an **e-learning and knowledge centre** and a separate reading room for students.
- Houses a significant collection of books catering to students and faculty.

4. Centenary Hall (Auditorium):

- A large auditorium used for events, seminars, and cultural programs.

5. Residential Facilities:

- **Staff Quarters:** Accommodation for staff members.
- **Girls' Hostel:** Residential facilities for female students.
- **Boys' Hostel:** Residential facilities for male students.

6. Sports and Fitness Facilities:

- **Playground:** For outdoor sports and activities.
- **Gym Section:** Equipped for physical fitness and training.

Main Administrative Building Overview: The administrative building is the oldest and most significant structure on campus. It houses multiple sections, including administrative offices,

academic facilities, and departmental rooms. The building also features a botanical garden with tall trees, contributing to the campus's green environment.

Sections and Departments in the Administrative Building:

1. Administrative Offices:

- Principal's Chamber
- Staff Common Room
- IQAC Room
- Accounts Section and Establishment Section
- Controller's Room

2. Academic and Support Facilities:

- Language Lab
- SAMS Lab
- Examination Section
- Academic Section

3. Classrooms and Laboratories:

- Twenty Classrooms including Smart Classrooms
- Computer Lab (PG Department of Commerce)
- BCA Lab

4. Departmental Rooms:

- NCC, NSS and YRC Room
- Girls' Common Room
- Boys' Common Room

5. Science, Commerce and Humanities Departments:

- All Science Departments (including PG Department of Botany)
- P.G. Department of Commerce

- Department of English and Philosophy
- Science Laboratories





New Academic Building Overview: The new academic building is a modern facility equipped with advanced infrastructure to support teaching, research, and academic activities.

Key Sections in the New Academic Building:

1. Smart Classrooms:

- 12 state-of-the-art classrooms equipped with smart technology for interactive learning.

2. Conference and Research Facilities:

- Mini Conference Hall (AB-07): Designed for meetings, seminars, and discussions.
- Research Lab: A dedicated space for advanced research activities.

3. Laboratories:

- PG Laboratories:
 - Physics Laboratory
 - Zoology Laboratory
- Computer Lab:
 - Designed for students, equipped with modern computing resources.



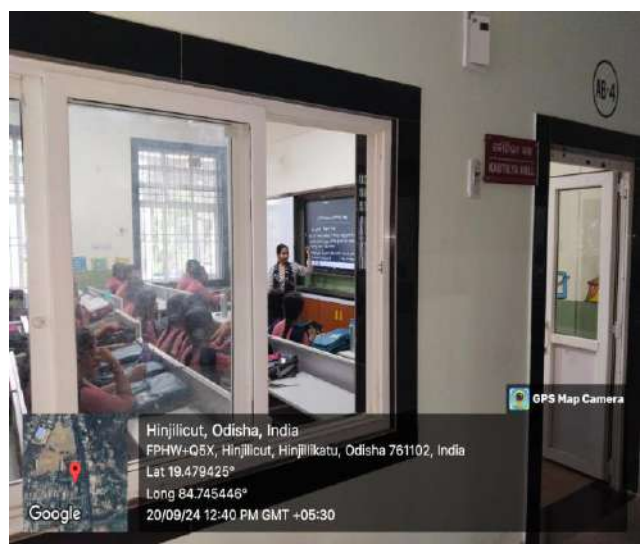
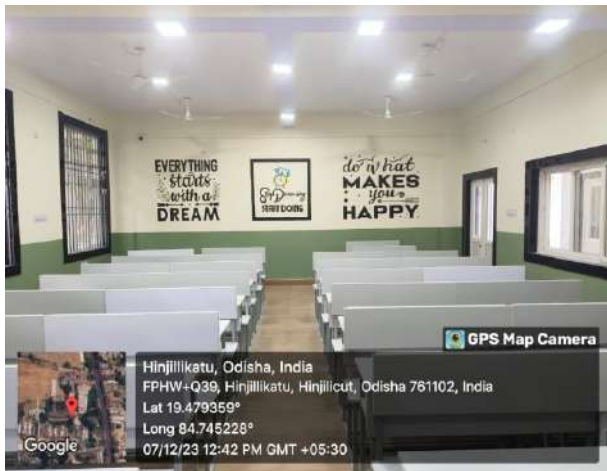
New Academic Building



Research Lab



Computer Lab for Students



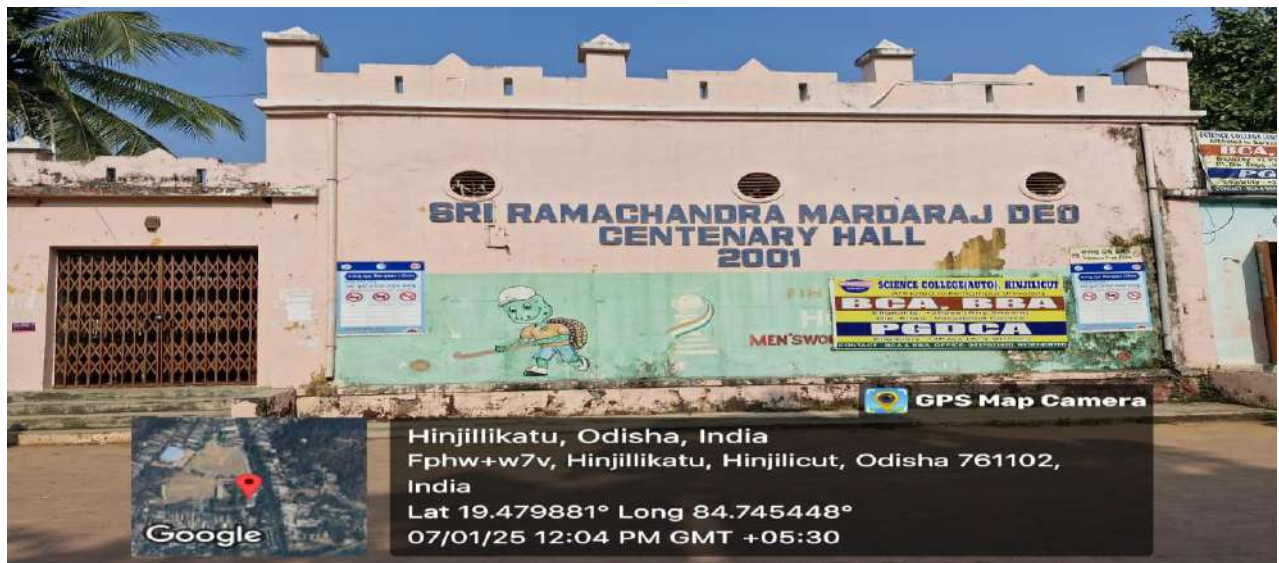
Smart Classrooms in New Academic Building

Central Library Overview: The Central Library of Science College (Autonomous) is centrally located within the institution. It is a well-furnished, double-storied facility with an elegant academic ambiance.

- Features a collection of over 36,523 volumes of books spanning all the subjects offered by the institute.
- Includes 20 periodicals across various disciplines.
- Operates using locally provided Library Management Software, ensuring efficient service and management.



Centenary Hall Overview: Named Sri Ram Chandra Mardaraj Deo Centenary Hall, it serves as the college auditorium for events, seminars, and cultural programs. It was established in 2001.



Residential Facilities Overview:

1. Hostels:

- **Boys' Hostel: Dr. B.R. Ambedkar Boys' Hostel** with a capacity of 20 students.
- **Girls' Hostel: Gnana Pattanaik Girls' Hostel** with a capacity of 45 students.

2. Staff Quarters:

- Eight quarters for faculty and staff accommodation.



Girls' Hostel



Boys' Hostel

Sports and Fitness Facilities Overview: The college also features an Outdoor Stadium, a Gym, and a Yoga Centre to support sports, games, and physical fitness activities.

